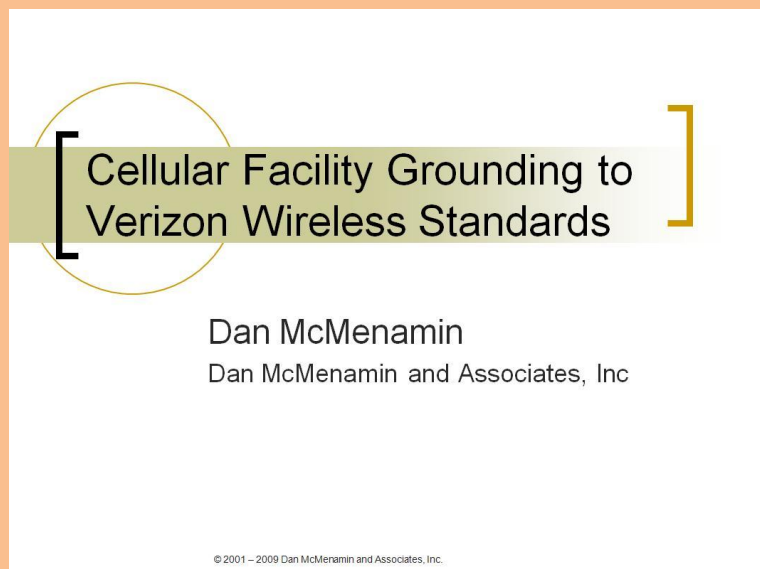


Cell & Microwave Site Grounding (Cell Grdg)



Duration: 1.0 Days

Course Description: This is a certification course and is a series of PowerPoint slides and exercises covering:

- The safety aspects of working at cell and microwave sites
- Bonding and grounding considerations for the building shelter
- Bonding and grounding considerations for cabinetized sites
- Bonding and grounding considerations for towers and yards
- Bonding and grounding considerations for rooftop installations

Target Audience: This course is designed for those who install or maintain cell or microwave sites and network facing Engineers Operations Managers, Construction Managers and technicians who interface with them. This training is geared for both the newcomer and experienced employees.

Course materials supplied: A copy of all slides is provided. Certification is provided upon passing a hands-on test.

Min/Max class size: Although the target class size is 15 – 20 students, any class size from 5 to 50 is possible.

Prerequisite skills: A basic familiarization with telecommunications facilities is helpful.

Cost: As this is a suit-cased course, travel and living time and expense can have a significant impact on overall cost as will the availability of suitable conference room facilities. Please contact us for a site-specific quotation. We'll need to know the approximate headcount, where in the country and whether a suitable conference room is available.

For more information: Please contact us at (215) 880-2488 or email dan@danmcmenemy.com